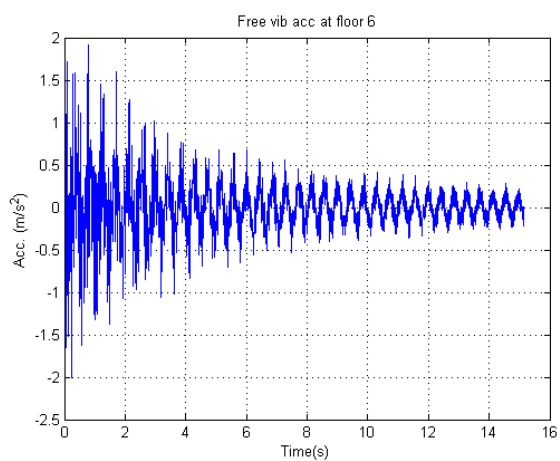
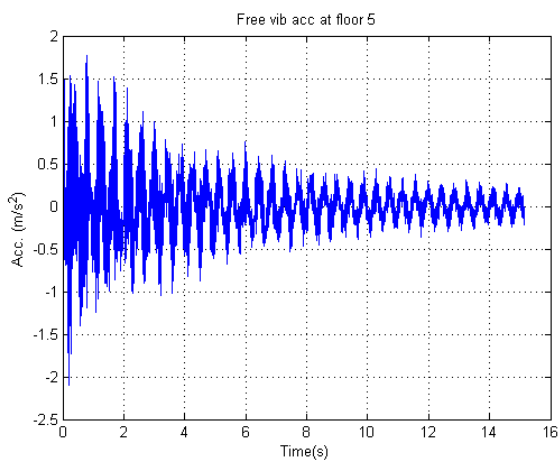
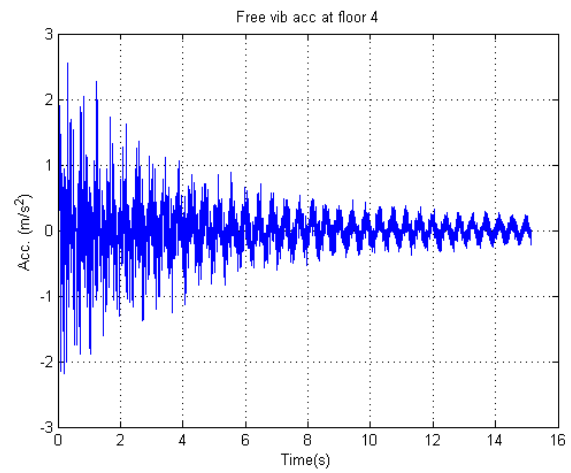
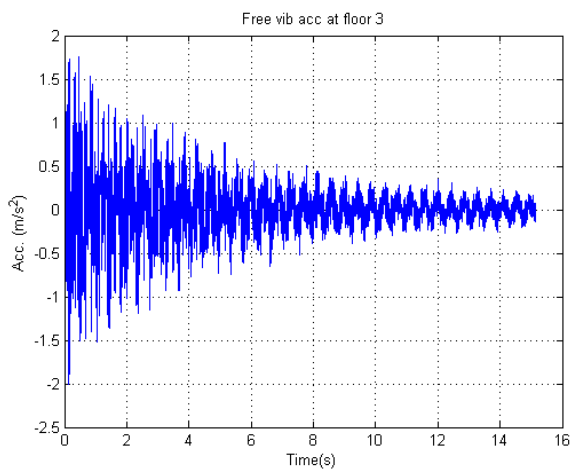
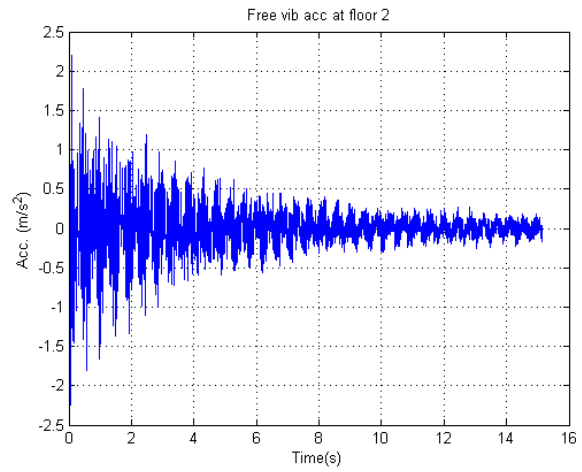
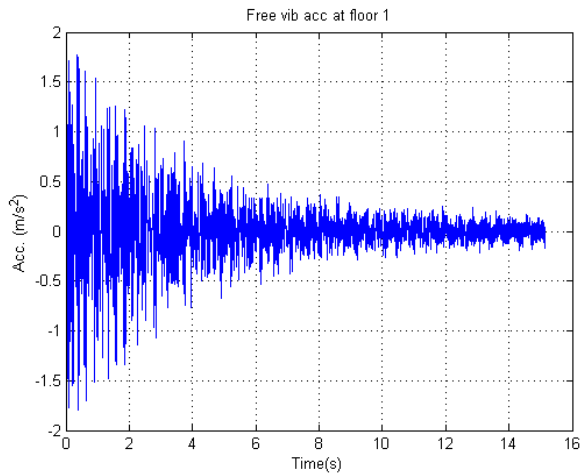


## Labdata Project 1 transient loading

Accelerometer data at the six floors are shown in the figures below for a transient load:



Data in a matrix with eight columns with time first, then the decaying acceleration for floor zero, followed by acceleration for floor one etc. until floor six. The figures above are plots of columns two to eight vs time (the first column). Data is found in a file named: Transdat