

## VSMN15/AAHN10 – Course Project

### Theme: Productive City

The theme for the course project is “Productive City” a term that has been used for several years, e.g. in relation to the European projects [1]. In this course project we will take the point of departure in terms of the description of the productive city as given for European 14 [1]:

*During the last decades a lot of urban renewal has been taking place in Europe. Organizations like European have been promoting the idea of the mixed-city, and we could now say that the ideology of the mixed-city is generally shared. But how mixed is this mixed-city actually? In many urban development projects of the post-industrial era, housing is the main program. We wisely add some office places and public amenities, but remain especially keen on stimulating bars, shops and restaurants because we want every new district to be a “genuine vibrant urban neighbourhood”. Looking back at how we organized this wave of urban regeneration, we can see how we have systematically excluded one program: the productive economy. Every warehouse has become loft apartments, every industrial shed an arts or leisure centre, every brownfield a fresh residential neighbourhood. The productive economy has left the city to the periphery, whether it is on the outskirts of the same city or to another end of the world. There is now in many European cities a spatial and social mismatch between living and working conditions. The city provides high-skilled professionals with many working possibilities while a large part of low-skilled workers live in the city with no work opportunity. This mismatch generates many problems with regard to economy, mobility and sociality. The urban renewal we have been developing under the auspices of the ideology of the mixed city is less mixed than what we pretend. Productive economy, manufacturing, maintenance and repair jobs... make part of city life as well. Our contemporary city is not a complete city. Of course, we should not bring back steel factories to the city centre. But we are already welcoming all kinds of small-scale urban manufacturing. We are accommodating more and more of the new recycling industry within the city itself. We could systematically save some space in our programs for redevelopment areas for small and medium enterprise's. We should avoid that the plumber who lives in the city and repairs our houses in the city has to drive out of the city to find available storage space. Production should be encouraged in the city, be part of the fabric, be allowed to be seen, connected to shared daily life, nurtured and celebrated. Which alternatives to produce for such a city? Instead of productivist programs based on separation and unlimited resources, the challenge is to reinvent proactive proximities, close circular economies, new alternatives of co-production and eco-sharing. Mixing living and working again could be a way to improve the process of hybridization between local and global economies, macro and micro strategies. And by introducing the production within the city, we therefore create new opportunities for more recycling, social interactions and urbanity. The goal is a more sustainable city.*

## Instructions

You will work in groups with three assignments A1-A3, where each assignment includes both compulsory consultation and critique. The final critique includes the whole project, i.e. includes presentation, discussion and critique of assignments A1-A3.

For all tasks, as for the course as a whole, you should highlight, discuss and solve *architectural and structural challenges and ambitions*. For example: What are the architectural ambitions? How to solve the structural challenges? How can the structural solutions communicate the architectural ambitions?

As regards the term Productive City, the following questions, see [1], might be used as a source of inspiration for your work:

*1- How to integrate some of the production activities in the city –such as the production of food, energy, low skilled services, new industrial products– to enhance new relations between citizens (to assist integration, confront gentrification, create new modes of learning and working)? How to take social embedment into account? How to involve the actors?*

*2- How to live in productive fields and to produce in living environment? How to manage the tensions emerging from the new relations between producing and living, such as the contamination affecting life quality?*

*3- How to integrate all the production cycles considering distribution, waste and consumption? How to encourage a diversity of (shorter?) cycles, anchor them in local contexts (the last mile) and articulate them to a larger eco-scale? The challenge for European 14 is to generate new kinds of proximity by connecting the living and the producing.*

## Site and program

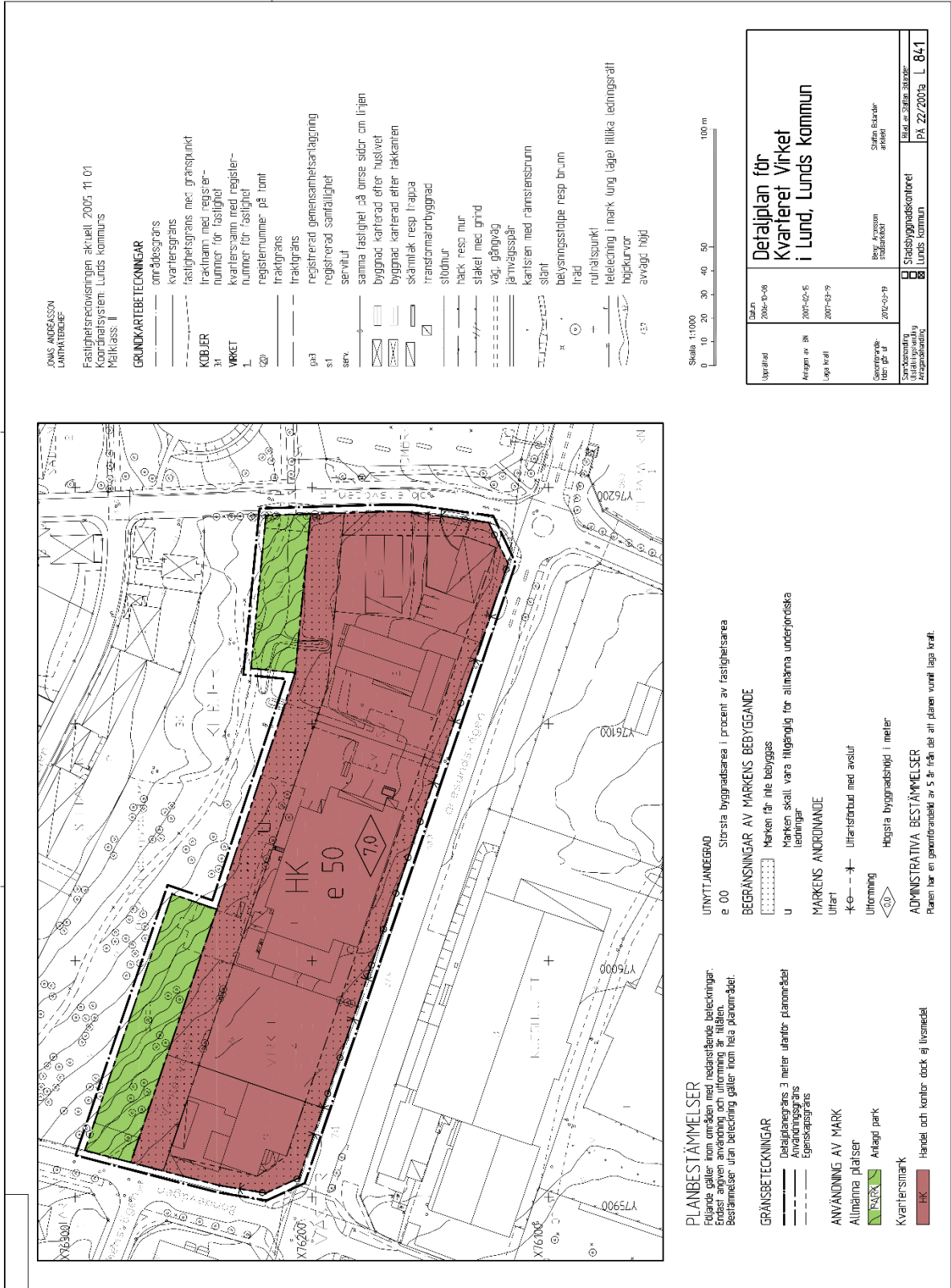
The site of the project is situated in Lund, see following pages. This area is interesting since it is one of very few left in the town of Lund where dwellings, industry and trade are really close to one another. Taking this site as a starting point the overarching aim of the project is to discuss at least:

1. Densification
2. Multifunctionality
3. Flexibility and adaptability

By *densification* is meant an increased use of land, from the maximum 50% degree of exploitation of today to 200-300%. This can be achieved by both vertical and horizontal densification.

By *multifunctionality* is meant containing within the same building/structure several functions, such as production, trade, public space and dwellings.

By *flexibility* and *adaptability* is meant designs allowing for multi-purpose uses and that are easy to change in case of altered requirements (type of activity, demographic changes etc).



JONAS ANDREASSON  
LANTMÄTARBEFÄLLNING

Fastighetsreviseringen aktuell 2005 11 01  
Koordinatsystem: Lunds kommuns  
Meklass II

**GRUNDKARTBETECKNINGAR**

- områdesgräns
- kvartersgräns
- fastighetsgräns med gränspunkt
- fraktnamn med registernummer för fastighet
- kvartersnamn med registernummer för fastighet
- registreringsnummer på tomt
- fraktgräns
- registrerad gemensamhetsanläggning
- registrerad samfällighet
- servitut
- samma fastighet på bägge sidor om linjen
- byggnad karterad efter huslivet
- byggnad karterad efter takkanten
- skännlak resp l-rappa
- transformatorbyggnad
- stodmur
- hack resp mur
- staket med grind
- väg, gångväg
- järnvägsspår
- kantsten med rännstensrum
- stall
- belysningsstolpe resp brunn
- irrad
- ruktspunkt
- ledledning i mark (lager) liklika ledningskraft
- höjkurvor
- avväggt höjd



Upprättad	2008-03-08	Blad nr	Stadsbyggnadskontoret Lunds kommun
Ändrad av BK	2007-02-16	Blad nr	Stadsbyggnadskontoret Lunds kommun
Laga kraft	2007-03-19	Blad nr	Stadsbyggnadskontoret Lunds kommun
Översiktsplan laga 08 01	2002-03-19	Blad nr	Stadsbyggnadskontoret Lunds kommun
Samtyckande Ärvtjänstutövning		Blad nr	Stadsbyggnadskontoret Lunds kommun
			Blad nr: Stadsbyggnadskontoret PA 22/2009a L 84.1

**PLANBESTÄMMELSER**

Färdiga gator och områden med medeltäthetsbebyggelse. Bestämmelser utan beteckning gäller inom hela planområdet.

- GRÄNSBETECKNINGAR**
  - Detailplanens gränser 3 meter utanför planområdet
  - Användningsgräns
  - Egenskapsgränser
- ANVÄNDNING AV MARK**
  - Allmänna platser
  - ESERK Anlagd park
  - Kvartersmark
  - HK Händel och kontor dock ej livsmedel

**UTNYTTJANDEGRAD**

e 00 Största byggnadsarea i procent av fastighetsarea

**BEGRENSNINGAR AV MARKENS BEBYGGANDE**

U Marken får inte bebyggas  
Marken skall vara tillgänglig för allmänna underjordiska ledningar

**MARKENS ANORDNANDE**

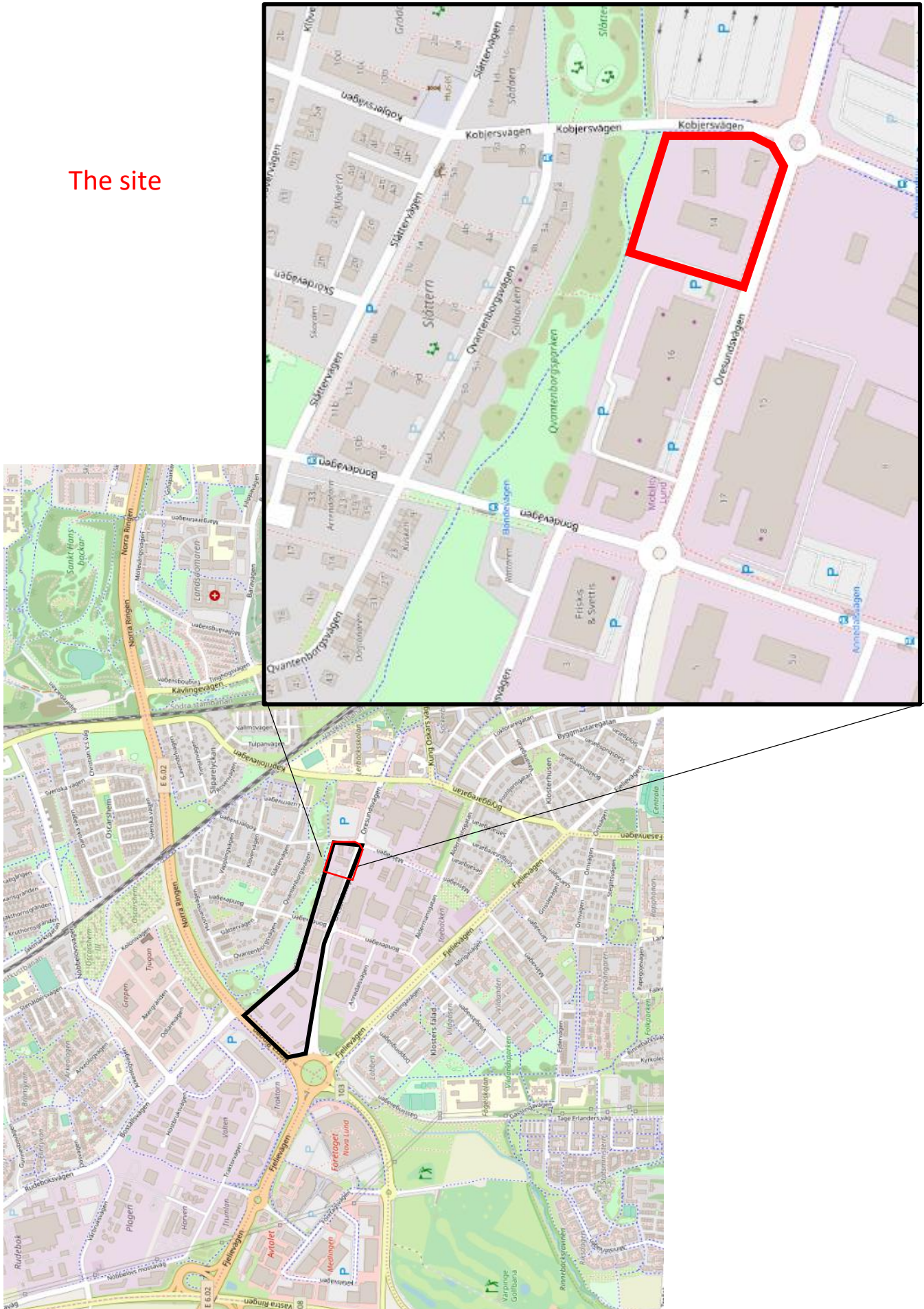
Ullarti Ullarti  
Ullarti Ullarti med avstul  
Ullarti Ullarti med avstul  
Ullarti Ullarti med avstul

Högsta byggnadshöjd i meter

**ADMINISTRATIVA BESTÄMMELSER**

Planen har en genererande effekt av 5 år från det att planen varit laga kraft.

The site





### Assignment 1 – The intuitive/research phase – Deadline 11 February, 24:00

In the first assignment your task is to perform early exploratory studies to use as a basis for the continued design work. You should present:

1. Several (3-5) strategic concepts for the site
2. Examples of
  - a. Densification strategies (horizontal/vertical)
  - b. Functions and their organisation (dwellings/halls/production/recreation/public space)
  - c. Flexibility / adaptability
  - d. Consequences from structural point of view and from an architectural point
3. One visualised concept (basic physical model)

**Consultation:** Compulsory, 5 february, Doodle: <https://doodle.com/poll/6hpbsascxcccig8v>

**Critique:** 12 February, presentation will be “on the wall” in A:3011, one wall board section per group.

### Assignment 2 – The intentional phase – Deadline 4 March 24:00

Narrow down! Here you should go from conceptual studies and entering the world of setting physical proportions. You should present:

1. Three developed versions of one of the strategic concepts from Assignment 1 (can also be combinations of previous concepts). Each of the three versions should include a developed load carrying idea.
2. Chosen principles in terms of
  - a. materials
  - b. structural systems
  - c. architectural expression.

**Consultation:** Compulsory, 26 February, Doodle: <https://doodle.com/poll/d3wcfmehhfg28q3c>

**Critique:** 5 March, presentation will be “on the wall” in A:3011, one wall board section per group.

### Assignment 3 – The evaluation phase – Deadline 5 April 24:00

Evaluate, refine, iterate and integrate! You should present:

1. A further detailed and refined final design proposal (one of the 3 versions from Assignment 2)
2. Evaluation and benchmarking:
  - a. the three main criteria (densification, multifunctionality and flexibility/adaptability)
  - b. the relation between structural and architectural values.
3. A story of your work, *i.e.* include not only the final result but also the development of your work. Abandoned ideas and important decisions taken should be highlighted.

**Consultation:** Compulsory, 25 March, Doodle: <https://doodle.com/poll/draag64xyep9xy59>

**Critique:** 8 April, presentation will be “on the wall” in A:3011, one wall board section per group.

### References

[1] [https://www.euopan-europe.eu/media/default/0001/12/e14\\_topic\\_en\\_web\\_pap\\_pdf.pdf](https://www.euopan-europe.eu/media/default/0001/12/e14_topic_en_web_pap_pdf.pdf)